

# Ultra Secure Storage and Bomb Shelter

- Above Ground - 2 Warehouses  
1) 3000 sf 2) 700 sf
- Below Ground – 8500 sf  
Atomic Bomb Shelter
- 9.7 Acre Fenced Lot
- High Security Facility – will  
withstand 20 megaton atomic  
blast – 2 ft reinforced concrete
- Ceiling Height – 24 feet
- Crane System to hoist heavy  
objects
- EMP Detector closes vents
- 1200 lb Bomb Door



19103 US Highway 54, Encino, NM 88321

**\$3,000,000**

Andrew Ostrander  
480-229-6999  
AndrewOAZ@cox.net





**What do you want to preserve  
for the future?**

**A 9.7-acre fenced property consisting of two above-ground warehouses, including a crane system to hoist heavy objects. Underground is an 8,500 SF reinforced bomb shelter built in 1965 by AT&T for government communications. Designed to withstand a 20-megaton atomic blast from 2 miles away, this high-security facility includes advanced structural reinforcements, self-sustaining utilities, and protective systems, including EMP Detector that closes the vents and 2 ft reinforced concrete (20,000 PSI).**



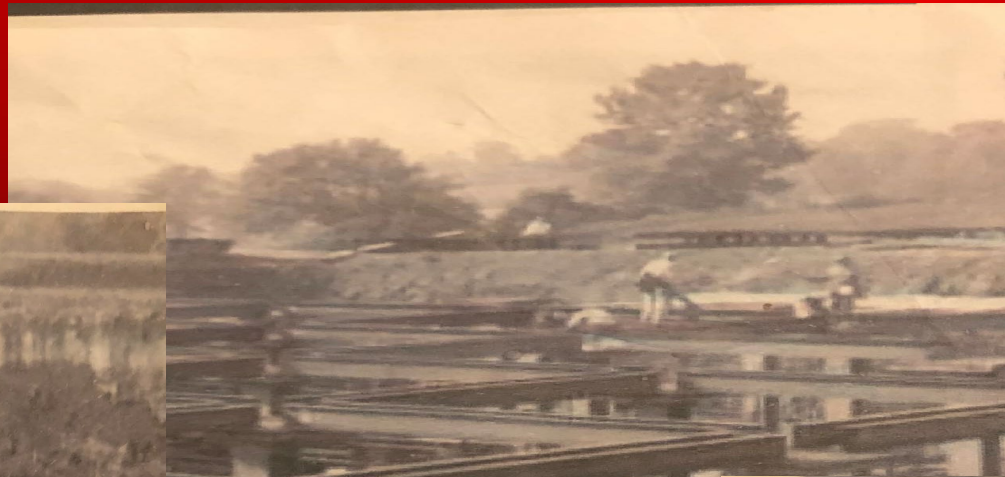
- » 8,500SF Bomb Shelter - capable of withstanding a 20 megaton atom bomb hit from 2 miles from ground zero.
- » 24ft Ceiling
- » 2ft reinforced concrete - 20,000 PSI
- » 4 large rooms about 2,000 SF each.
- » Surrounded by 10'x5' steel slabs - each 1 inch thick
- » Surrounded by Copper screen mesh
- » Moat around the building that has External Water Pump to drain
- » Vibration Isolation Protection with Spring Loaded Floors

- » Sealed Air Tight – O Ring
- » EM pulse detector - automatically locks down the vents
- » 1200lb bomb door
- » 2 Escape Hatches Plus Main Door
- » 208 3 phase 1,000 amp Service
- » 250kw diesel backup generator
- » 10,000 gallon stainless steel tank to hold water underground
- » Air Conditioner room has 3 x 10-ton AC Units
- » Biological HEPA filter room
- » Double Pump sewage

- » All air intake and outlets automatically close for emi/nuclear bomb
- » Some electrical and piping parts have been removed.
- » Radiation Shower Room
- » 58 degrees all year round in the lab.
- » Built in 1965, originally owned by AT&T where they used to store the large computers and had an 8" phalange for fiber optic link communication control for the government.

**What do you want to preserve  
for the future?**





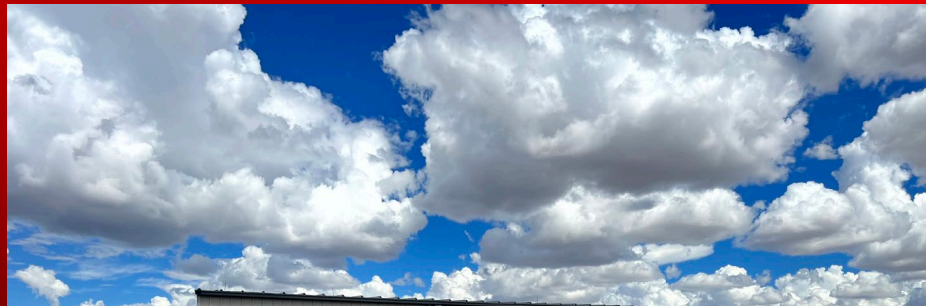
Photos from the original construction by AT&T in the 1960's





## Above ground storage warehouses







**\*Some electrical and piping components have been removed.**





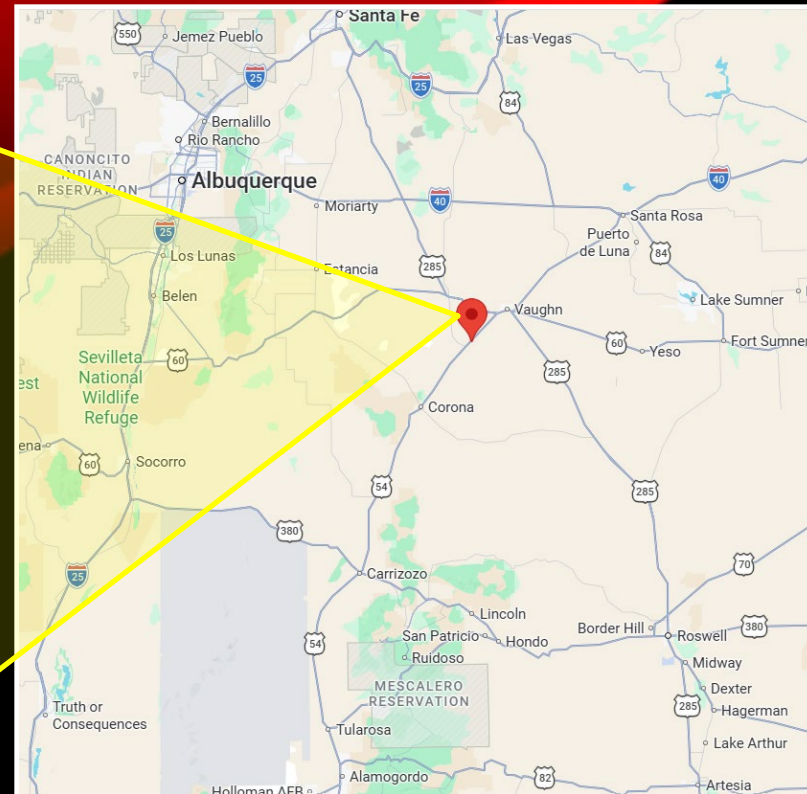
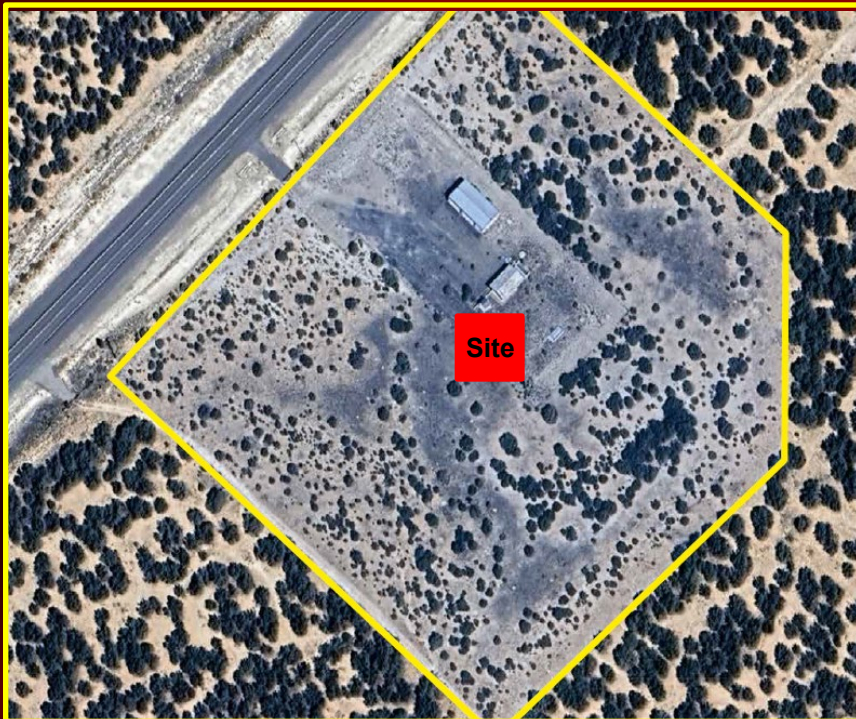
**Aerial Photo**



**What do you want to preserve for the future?**

**Andrew Ostrander**  
**480-229-6999**  
**AndrewOAZ@cox.net**





**Andrew Ostrander**  
**480-229-6999**  
**AndrewOAZ@cox.net**

